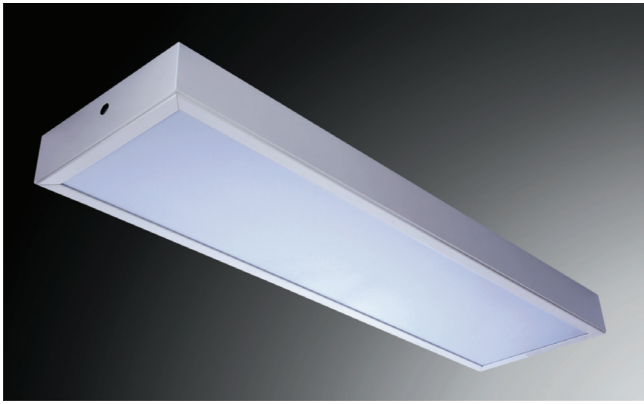
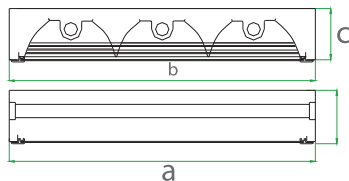


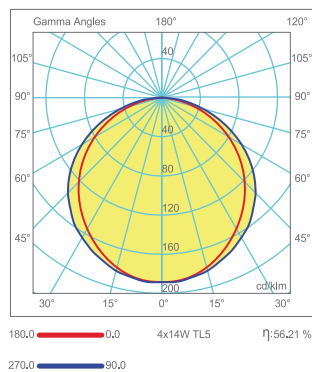
# T8 - T5 - LED Tube Clean Room Luminaires



Technical Drawing



Light Distribution  
Curve



## Fields of Application



## Standards of Application



## Product Details

Order Code (FT5,T8)	Order Code (T5,T8 - LED Tube)	Power (W)	Lamp Type	Power Factor	Dimensions (mm) a b c	Base	Pcs/Pack	Ballast Type Options
CST 070813	CST 070125	2x18/12	TL-D	>0.95	622x350x100	G13	2	Magnetic Electronic
CST 070814	CST 070126	3x18/12	TL-D	>0.95	622x450x100	G13	2	Magnetic Electronic
CST 070815	CST 070127	2x36/24	TL-D	>0.95	1232x350x100	G13	2	Magnetic Electronic
CST 070816	CST 070128	3x36/24	TL-D	>0.95	1232x450x100	G13	2	Magnetic Electronic
CST 070513	CST 070129	2x14/9	TL-D	>0.95	580x350x100	G5	2	Electronic
CST 070514	CST 070130	3x14/9	TL-D	>0.95	580x450x100	G5	2	Electronic
CST 070515	CST 070131	2x28/18	TL-D	>0.95	1180x350x100	G5	2	Electronic
CST 070516	CST 070132	3x28/18	TL-D	>0.95	1180x450x100	G5	2	Electronic

## Mechanical Specifications

+ 0,50 mm thick metal frame with electrostatic powder coating. Stainless steel latches positioned to prevent falling of the framework. Ceiling tile compatible model including 4 extra brackets and screws for drywall ceiling installations

## Optical Specifications

+ High transmission PMMA optical cover with homogenous luminous distribution, non-yellowing and non-discolouring throughout lifetime of the luminaire. Anti-glare, highly reflective lamellae.

+ Uses special design, special rubber installed in-between lamp and transparent shade to acquire sealing effect, buckle spring design, and easy mounting and maintenance.

+ Undergoes rust removal, grease removal, and rustproof treatment, and full spray-coated treatment, no rust will appear for normal indoor use.

+ Protecting shade: PMMA transparent sheet; reflector: uses bat-wing shape design, even lighting, no glare.

## Technical & Electrical Specifications

- Luminaires for fluorescent & LED lamps T16 (T5), T26 (T8)

- Connection for operation on 220V-50/60Hz with conventional ballast and power factor correction capacitor (lamps T26).

- Connection for operation on 220V-50/60Hz with electronic ballast (lamps T26, T16).

- Connection for operation with magnetic ballast or electronic ballast dimmable (lamps T26, T16).

## Options

- Connection for emergency lighting system (lamps T26, T16).

- Ivory white organic & Rhombic Cover

